

NEXTREV conference  
LISBON  
29-30 May 2008

# Health Innovation Accelerator → Health Launchpad

THE NESTA-YOUNG FOUNDATION

Health Innovation *Accelerator*

# Health Innovation Accelerator → Health Launchpad



NESTA & Young Foundation working together

# The Young Foundation



Michael Young



# THE YOUNG FOUNDATION



OUR BUSINESS IS SOCIAL INNOVATION ↘

## Latest News [ALL NEWS ↘](#)



### THE VALUE OF POSITIONAL GOODS (14.09.2006)

Our latest thinking on 'positional goods' and the new kinds of inequalities the modern economy is throwing up. [More...](#)



### LONDON OLYMPICS 2012 (01.09.2006)

A report revealing the potential impact of the London Olympics 2012 on Brick Lane and Green Street from the perspective of local retailers. [More...](#)

## Forthcoming Events [ALL EVENTS ↘](#)

### Free Lunchtime Seminar: Professor Paul Higgins

Professor Higgins will be talking about his interest in penal reform, and the implications for anyone considering a spell

12.45pm - 28.09.06  
Young Foundation, E2



[MORE INFO ↘](#)

[BOOK ↘](#)

### Young Foundation Lecture: Lord Browne

Former Chief Executive of BP, Lord Browne talks about his thoughts on 'Life Beyond Retirement'

8.15pm - 11/10/06  
Wilsons Music Hall, E1



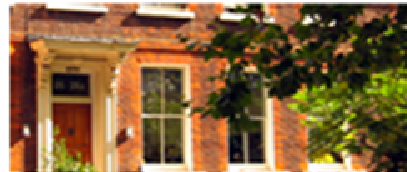
[MORE INFO ↘](#)

[BOOK ↘](#)

## WELCOME

The Young Foundation is a centre for social innovation based in London – combining practical projects, the creation of new enterprises, research and publishing - what a brief intro!

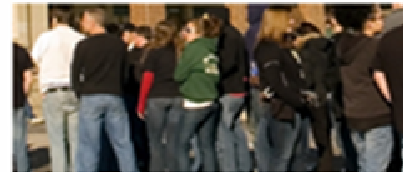
[Read more about us ↘](#)



## PROJECT HIGHLIGHTS

**Studio Schools** - New Model Schools for the 21st Century and a new approach to educating 14-19 year olds in ways that integrate learning, entrepreneurship and work

[Find out more about Studio Schools ↘](#)



## LATEST PUBLICATION

**Good and Bad Power** - You won't find a more absorbing dissection of the state we're in or the world to which it belongs... a dazzling performance,' Peter Preston, The Observer.

[Browse our online bookshop ↘](#)



## COMMENT

**An agenda called extremism** - This is the beginning of a very brief comment from someone at the YF on something that's happening somewhere - it's content with added value

[Read more ↘](#)



## More from the Young Foundation

Stay up to date with news, events & other developments. Signup for our occasional e-newsletter:

[SIGNUP ↘](#)

# Launchpad venture Funds



launchpad  
at the young foundation

From Think-Tank to Do-Tank

# Launchpad venture Funds

## Young Foundation Social Investment Fund

projects close to the Young Foundation  
social impact + financial return

# Health Launchpad

long-term medical conditions

## Learning Launchpad

practical learning, non cognitive skills

Future Funds:

Social Technology?

Environment?

Criminal Justice?

# Launchpad venture Funds

## Young Foundation Social Investment Fund

projects close to the Young Foundation  
social impact + financial return

# Health Launchpad

long-term medical conditions

## Learning Launchpad

practical learning, non cognitive skills

Future Funds:

Social Technology?

Environment?

Criminal Justice?

# Launchpad venture Funds

## Young Foundation Social Investment Fund

projects close to the Young Foundation  
social impact + financial return

# Health Launchpad

long-term medical conditions

## Learning Launchpad

practical learning, non cognitive skills

Future Funds:

Social Technology?

Environment?

Criminal Justice?

# Launchpad venture Funds

## Young Foundation Social Investment Fund

projects close to the Young Foundation  
social impact + financial return

# Health Launchpad

long-term medical conditions

## Learning Launchpad

practical learning, non cognitive skills

Future Funds:

Social Technology?

Environment?

Criminal Justice?

# Launchpad venture Funds

## Young Foundation Social Investment Fund

projects close to the Young Foundation  
social impact + financial return

# Health Launchpad

long-term medical conditions

## Learning Launchpad

practical learning, non cognitive skills

Future Funds:

Social Technology?

Environment?

Criminal Justice?

# Launchpad Overview (1)

internal ideas and early stage funding of external entrepreneurs and ventures

social impact through innovation that is:

sustainable and scalable

## Promising Ideas into new Ventures

an inside-outside organisation:

leverages its networks with government, the public sector and industry to facilitate the growth of new organisations

critical pathfinders that can break the mould

whilst remaining sufficiently independent to ensure flexibility and innovation across public sector boundaries

# Launchpad Overview (1)

internal ideas and early stage funding of external entrepreneurs and ventures

social impact through innovation that is:

sustainable and scalable

## Promising Ideas into new Ventures

an inside-outside organisation:

leverages its networks with government, the public sector and industry to facilitate the growth of new organisations

critical pathfinders that can break the mould

whilst remaining sufficiently independent to ensure flexibility and innovation across public sector boundaries

# Launchpad Overview (1)

internal ideas and early stage funding of external entrepreneurs and ventures

social impact through innovation that is:

sustainable and scalable

## Promising Ideas into new Ventures

an inside-outside organisation:

leverages its networks with government, the public sector and industry to facilitate the growth of new organisations

critical pathfinders that can break the mould

whilst remaining sufficiently independent to ensure flexibility and innovation across public sector boundaries

# Launchpad Overview (1)

internal ideas and early stage funding of external entrepreneurs and ventures

social impact through innovation that is:

sustainable and scalable

## Promising Ideas into new Ventures

an inside-outside organisation:

leverages its networks with government, the public sector and industry to facilitate the growth of new organisations

critical pathfinders that can break the mould

whilst remaining sufficiently independent to ensure flexibility and innovation across public sector boundaries

# Launchpad overview (2)

- Our aim is to scope, pilot and then launch new ventures through a staged venture capital style process allowing ideas to be fully designed, developed and launched.
- This approach allows us to provide both funding (grants, loans, equity) and intensive non-financial support to new ventures.

# Health Launchpad:

Accelerating  
Innovation in  
Healthcare

- Summary
  - Health Themes
  - Where do our ideas come from?
  - Methodology
  - Our ambition
  - Our projects

# Health themes

Healthcare in the UK is in the midst of an historic transition. Shaped by the 19th century problems of contagious and acute disease, the National Health Service now has to cope with a new epidemic of long term conditions. By the end of the last century, long term conditions accounted for 80% of NHS spending.

Our definition of long term conditions is broad; it extends to asthma, obesity, mental illness and chronic back pain.

We emphasize:

- patient-centred approaches, treating individuals as competent interpreters of their own lives
- Physical and emotional resilience
- prevention, continuity of care and non-medical support.
- informed and supported choice

# Where do our ideas come from?

- Call for ideas

Long term conditions  
Working Well

- Public Policy

- Insights

NHS (PCTs)  
Third Sector (Patient Organisations)  
Partners (Philips)

- Internal Ideation

Young Foundation  
Team  
Consultants

# Project screening

- Three stages of investment
  - Stage one – concept development: ~ £20-30k
  - Stage two – proof of concept/piloting: ~ £100k
  - Stage three – larger pilots or full launch: ???
- Pipeline
- Screening templates
- Bell-Mason and Health Launchpad Evaluation

# Health Launchpad projects

Healthy Incentives

PlanMyCare.com

Active Community Living

kidsof.com

Emotional Resilience for Older People

# Health Launchpad projects

Healthy Incentives

PlanMyCare.com

Active Community Living

kidsof.com

Emotional Resilience for Older People

# Health Launchpad projects

Healthy Incentives

PlanMyCare.com

Active Community Living

kidsof.com

Emotional Resilience for Older People

# Health Launchpad projects

Healthy Incentives

[PlanMyCare.com](https://www.planmycare.com)

Active Community Living

[kidsof.com](https://www.kidsof.com)

Emotional Resilience for Older People

# Health Launchpad projects

Healthy Incentives

PlanMyCare.com

Active Community Living

[kids-of.com](http://kids-of.com)

Emotional Resilience for Older People

# Health Launchpad projects

Healthy Incentives

PlanMyCare.com

Active Community Living

kidsof.com

Emotional Resilience for Older People

# Active Community Living

Financed by:

Early warning:

Service Provision:

# Active Community Living

## Early warning:

- Local “askers”
- Basic services
- Signposting
  - Self
  - Children
  - Professionals
- Marketplace
  - Advertising
  - Brokering

# Active Community Living

## Financed by:

- Public Services
  - Health
  - Social care
- Existing spend
  - Cleaner
  - Gardener
  - Handyman
- Children
- Insurance plan

## Early warning:

- Local “askers”
- Basic services
- Signposting
  - Self
  - Children
  - Professionals
- Marketplace
  - Advertising
  - Brokering

# Active Community Living

## Financed by:

- Public Services
  - Health
  - Social care
- Existing spend
  - Cleaner
  - Gardener
  - Handyman
- Children
- Insurance plan

## Early warning:

- Local “askers”
- Basic services
- Signposting
  - Self
  - Children
  - Professionals
- Marketplace
  - Advertising
  - Brokering

## Service Provision:

- Employees ACL
- Public providers
- Volunteers
  - Small fee
  - Time banking
- Local Trades
- New profession

# Our ambition

## In 10 years Health Launchpad will:

- Have demonstrated itself to be an effective model for creating innovative, scalable and sustainable social ventures (and one which could be replicated in other sectors and other countries)

- Have launched 3 flagship social ventures that are sustainable and scalable or replicable

- Be making a tangible difference to the quality of life of people with long term conditions

[joop.tanis@youngfoundation.org](mailto:joop.tanis@youngfoundation.org)